

U-Pick

Southwestern Idaho

Anderson Apple Ranch

1877 W. South Slope Rd.
Emmett, ID 83617

Phone: (208) 365-3434

www.andersonappleranch.com

Open: Mid- September through October

Call for hours (closed Sundays)

Products: Apples (Red Delicious and Golden Delicious), pumpkins

B and J Orchards

1221 W. South Slope Rd.
Emmett, ID 83617

Phone: (208) 365-1221

Open: Mid-June through mid-July

Products: Cherries

Bailey's Berries

3141 Strobel Rd.
Kuna, ID 83634

Phone: (208) 724-5304

Open: Sept-First Freeze, 8am-Dusk

Call ahead for availability

Products: Raspberries

Cabalo's Orchard & Gardens

2087 West King Rd.
Kuna, ID 83634

Phone: (208) 922-3301

www.cabalosorchard.com

Open: Mid June - October

Products: Apples, blackberries, pumpkins

Candy Apple Orchard

1871 W. South Slope Rd.
Emmett, ID 83617

Phone: (208) 365-1413

Email: carol@candyappleorchard.com

www.candyappleorchard.com

Open: October 1- 31, Check Website for availability

Products: Apples (Rome Beauties, Red Delicious and Golden Delicious)

Cherrystone Orchard

1411 W. South Slope Rd.
Emmett, ID 83617

Phone: (208) 365-2344

www.applesandcherries.com/cherrystone.htm

Open: Season begins mid-June, 7 days a week

Products: Cherries

Frisbee Orchard

3990 Fuller Rd.
Emmett, ID 83617

Phone: (208) 365-3054

Open: Call to check for availability

Products: Cherries

How 'Bout Them Apples

1113 W. South Slope Rd.
Emmett, ID 83617

Phone: (208) 398-8448

Open: Mid September - October

www.applesandcherries.com/elliott.htm

Products: Apples (Golden and Red Delicious)

Kelley Orchards

53 Hill Rd.
Weiser, ID 83672

Phone: (208) 642-7265

www.kelleyorchards.com

Open: Early July - late October, call for more information

Products: Tart cherries, peaches, apples, nectarines, plums, raspberries and blackberries.

Krizenesky Orchards

787 W. South Slope Rd.
Emmett, ID 83617

Phone: (208) 365-2288

Open: Late June until they are all picked

Products: Cherries

Linder Farms

7165 S. Linder Rd
Meridian, ID 83642

Phone: (208) 856-0386

www.linderfarms.com

Open: Mid September - October

Products: Pumpkin patch

Montierth Home Orchard and Garden

7175 N. Springcrest
Meridian, ID 83642

Phone: (208) 888-3081

Open: During October, by appointment only

Products: Apples, pumpkins

Perin Orchard

1881 W. South Slope Rd.
Emmett, ID 83617

Phone: (208) 365-0648

www.applesandcherries.com

Open: Weekends or by appointment

Products: Apples,

Plaza Farm Store

2850 N. Plaza Rd.
Emmett, ID 83617

Phone: (208) 365-7255

Open: Times may vary—call ahead

Products: Cherries, peaches, pears, apricots, and blueberries

Rancho Pinard

4300 S Mill Rd.

Emmett, ID 83617

Phone: (208) 365-6127

Open: Call for availability (varies by season)

Products: Cherries and peaches

Shurtleff Vineyards

12495 Hill Rd.

Payette, ID 83661

Phone: (208) 642-3062

shurtleff.homestead.com

Open: Mid-September until the entire crop is picked, call and check for availability

Products: Grapes (Concord juice)



Has an on-farm stand with other already picked produce available for purchase



Is a member of Idaho Preferred®

Suyehira Farm

777 E. South Slope Rd.
Emmett, ID 83617

Phone: (208) 365-4080

Open: Late June - Early August

Products: Blueberries

The Berry Ranch

7988 Highway 20/26
Nampa, ID 83686

Phone: (208) 466-3860

www.theberryranch.com

Open: June-October, Mon-Sat, 10am - 6pm

Products: Strawberries, raspberries, rocky mountain blue berries, blackberries, and pumpkins

Tyler's Rocky Point Orchard

145 E. South Slope Rd.
Emmett, ID 83617

(208) 283-0652

Orchard at the end of South Johns Ave.

www.rockypointorchard.com

Open: Mid June- October, call for availability

Products: Cherries, apricots, peaches, plums

Wee King's Orchard

2955 W. South Slope Rd.
Emmett, ID 83617

Phone: (208) 398-8047

Open: June- October

Monday, Tuesday, Thursday , Friday

Products: Apples, cherries, peaches, plums, apricots

Wild Rush Flowers

6016 East Carson Court
Nampa, ID 83687

Email: WildRushFlowers@gmail.com

Open: Open Everyday June-September

Products: Zinnias, cosmos, sunflowers, statice, lupine, sweet peas, and more

William's Fruit Ranch

2455 W South Slope Rd.
Emmett, ID 83617

(208) 365-7757

Open: June - September, 7 days a week

Products: Cherries, peaches, plums, apples

Northern Idaho

Riley Creek Blueberry Farms

44 Whitney Way, Laclede, ID 83841

Phone: (208) 263-4114

www.rileycreekblueberryfarm.com

Open: Mid-July through mid-September

Products: Blueberries, raspberries and blackberries

The Hughes Farms

7074 W Prairie Ave., Post Falls, ID 83854

Phone: (208) 773-2584

Email: hughes-farm@live.com

Open: Monday-Saturday 8am-6pm beginning in June

Products: Blueberries, raspberries (red and yellow), and strawberries.

University of Idaho Soil Stewards

Plant Science Road, Moscow, ID 83843

Phone: (208) 885-9245

Email: soilstewards@uidaho.edu

Open: June-November (call ahead for days and hours)

Products: various crops and flowers

Southcentral Idaho

Apple Creek Farm

81 South 350 West, Jerome, ID 83338

Phone: (208) 280-2943

Open: Call for appointment

Products: Organic apples, apricots, grapes, melons, nectarines, pears, peaches, raspberries, strawberries, and a variety of produce

CSIdaho Brekinridge Endowment Farm

North College Blvd, Twin Falls, ID 83310

Phone: (208) 404-3994

Open: Saturdays 9am-1pm or by appointment

Products: raspberries (red and yellow)

Proost Family Farm

2794 Addison Ave. East, Twin Falls, ID 83301

Phone: (208) 733-2323

Open: Early July - end of October, Monday - Saturday

Products: Melons, raspberries, honey, and a variety of produce

Raugust Strawberry Farm

259 E. 300 S., Jerome, ID 83338

Phone: (208) 324-2036

Open: mid-late June, no pets.

7-11am and evenings 5-8

Call for availability

caraugust@bridgemail.com

Products: Organic strawberries

Tubbs' Berry Farm

1150 Southpark Ave. West, Twin Falls, ID 83301

Phone: (208) 961-0969

www.tubbsberryfarm.com

Open: U-pick by appointment only

Products: Strawberries, raspberries, pumpkins

Eastern Idaho

Ashland Produce

158 North 4544 East, Rigby, ID 83442

Phone: (208) 538-6031

Open: Mid July - October

Products: Variety of vegetables, pumpkins

Corbridge Country Berries

1710 N. 100 W., Malad, ID 83252

Phone: (208) 766-2644

Open: Mid June - September Call for availability

Products: Raspberries, strawberries, blackberries

David Sant's Farm

5645 N. Westside Hwy., Clifton, ID 83228

Phone: (208) 747-3012

Open: Call for Availability and hours

Products: Sweet corn

Isom's Apple Fruit Farm

150 S 900 West, Blackfoot, ID 83221

Phone: (208) 684-4573

Email: info@isomapples.com

Products: Apples

Jeff Hobbs' Farm

24 N. 1st E., Franklin, ID 83237

Phone: (208) 646-2401

Products: Gourds, pumpkins, squash, sweet corn

Preston Berry Farms

660 South State St., Preston, ID 83263

Phone: (208) 540-0232

Open: Early August - late October; call to check availability

Products: Raspberries

Shoemakers

201 N. 300 W., Blackfoot, ID 83221

Phone: (208) 785-6346

Open: July - November 9am -7pm

Call for availability

Products: Many varieties of vegetables

U-Pick Red Barn

Near Tautphaus Park on Rollandet, Idaho Falls, ID

Phone: (208) 523-7101

upickredbarn.com

Open: Call to check availability

Products: Pumpkins, watermelon, cantelope, and a variety of vegetables

Woods Gardens

1882 E. 350 N., St. Anthony, ID 83445

Phone: (208) 624-4598

Open: Late June- late October, Monday - Saturday

Products: Beans, beets, broccoli, carrots, corn, cucumbers, melons, onions, peas, peppers, pumpkins, summer squash, winter squash, strawberries, tomatoes, raspberries

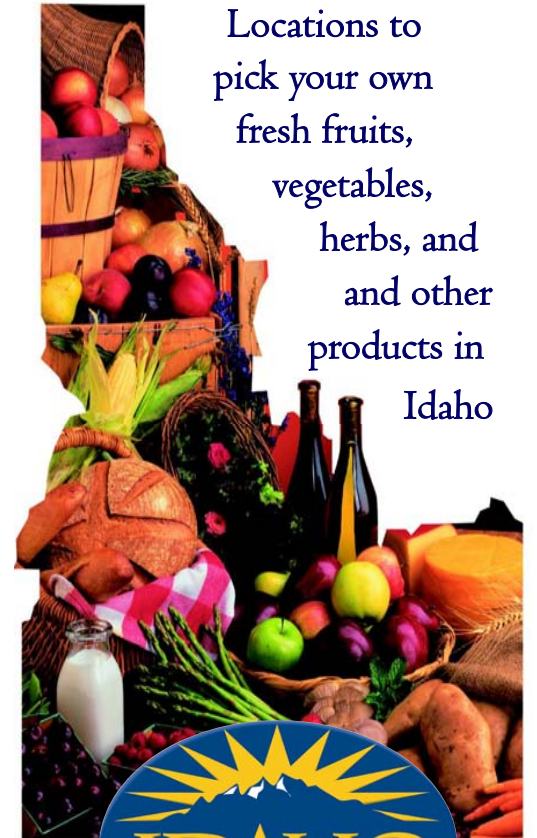
If you are a u-pick producer and would like to be included in this directory, please contact us at: (208) 332-8530.



Idaho State Department of Agriculture
2270 Old Penitentiary Rd.
Boise, ID 83712
(208) 332-8530
www.agri.idaho.gov

IDAHO

U-Pick Directory



Locations to
pick your own
fresh fruits,
vegetables,
herbs, and
and other
products in
Idaho



LIVE EAT LOCAL